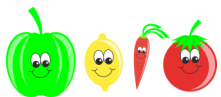




August

# The Grand Blanc UMC "Connection"

August, 2022



August 7

9<sup>th</sup> Sunday after Pentecost

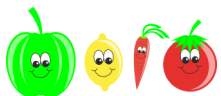
COMMUNION

Sermon Series:

"Burning Questions"

*"I Have a Feeling We're Not  
in the Library Anymore"*

Job 1: 1-12



August 14

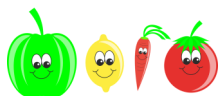
10<sup>th</sup> Sunday after Pentecost

Sermon Series:

"Burning Questions"

*"God and This Strange  
World We Live In"*

Exodus 32: 25-29



August 21

11<sup>th</sup> Sunday after Pentecost

Sermon Series:

"Burning Questions"

*"The Weird Economy of  
Grace"*

Luke 15: 11-32



August 28

12<sup>th</sup> Sunday after Pentecost

WORSHIP IN THE  
PARK  
TBD



## What's Informing What?

"What's informing what?" Throughout my 10 years of ministry, I have found that, time and time again, this question has been extremely helpful. The complete question, though, is a bit more nuanced: *What's informing what? Is my faith informing my politic, or is my politic informing my faith?* You could also ask the question with a little bit of a different verbiage: *Is my faith forming my politic, or is my politic forming my faith?*

Now before you classify this as a political speech by a pastor, no matter your feelings or leanings, don't run away. Give me a few minutes. Politics has become a bad word in the church...and maybe just about everywhere. We've equated "politics" with trickery and self interest by those who compete (and even fight) for our votes throughout the year. The word evokes images of yard signs, bumper stickers, and painfully bad television endorsements and attack ads. I'm going to suggest that we refuse to call that "politics" any longer. Politics is something far different – and far better.

The true definition of politics was defined long before Washington D.C. rose from the marshy land it sits on. It comes from the Greek *politica*, meaning "affairs of the cities." Maybe that origin doesn't blow you away. It shouldn't really be a surprise. Politics has always been, in its truest form, about caring for the day-in, day-out affairs of our communities, local, national, and even international. Politics is about how we care for our collective whole, rather than how we might selfishly care for ourselves. Politics is about how we move forward as a community – as a whole. It is not about the preservation of the status quo. Politics, in its truest form, is about how to grow as a society and as a community.

And so, from this moment on, let's do our best to understand the word "politics" to be about our collective, less-biased efforts to grow and thrive in community.

Now that we have a better definition of "politics," let's return to our initial question: "What's informing what?" Or "What's forming what?" To explore this, let's take a pretty obvious example. In Matthew 5:43-44, Jesus teaches:

***"You have heard that it was said, 'Love your neighbor and hate your enemy.' But I tell you, love your enemies and pray for those who persecute you."***

If our politics forms our faith, we might look at this passage and make the following argument: *There are so many in this world that seem to be out to get us. No matter where you look, it seems that there are enemies of the United States, and no matter how much I try to do the right thing, it seems that there is no escape. We need to do everything we can in our power to eliminate those who hate us. Certainly, Jesus understands that we need to protect ourselves. I can love my enemies and still do what I need to do to stop them, right?*

This perspective doesn't sound that unfamiliar, does it. And, quite frankly, it's not hard to justify it (I've done it, myself).

***Continued on next page...***

...Continued from previous page

But, what if we let our faith form our politic? Let's take a look at the same scripture: *There are so many in this world that seem to be out to get us. No matter where you look, it seems that there are enemies of the United States, and no matter how much I try to do the right thing, it seems that there is no escape. What would it look like for me to love them, though? Have I been praying for them? Have I tried to understand where they're coming from, even if I don't agree with them? When I'm voting, I wonder which candidate is praying for those who are against them and their campaign? When I'm signing petitions, does the proposed law seem to extend love or withhold it?*

Don't get me wrong, this second approach is much more difficult, far more often. That's because Jesus' teachings, when we look closely, are quite challenging. (I'd encourage you to keep practicing this with other teachings of Jesus).

And so, my commitment to you as your pastor is this: our church's affiliation will be to the gospel of Jesus Christ. I will continue to *preach* that same gospel and encourage you to let that same *good news* inform and form you in every way. Will we always agree? Of course not. And so in these spaces, let patience, love, and grace reign, and let the gospel inform and form our every relationship and interaction. Let the gospel inform and form our compassion and generosity. Let the gospel of Jesus Christ inform and form our desires for a more loving and just community and our individual and collective actions toward that end.

I just know that there's a word for that...

That's right... *politics*.

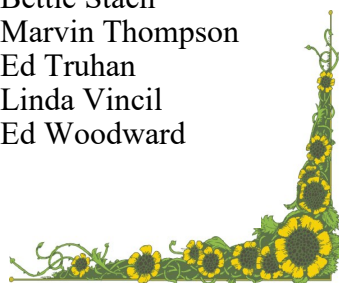
Love one another.  
Pastor Brian



**FOR OTHERS:**

Emily Abbott  
Erin Arbabha  
Hudson Bennett  
Nancy Bilas  
Roger Carter  
Tony Conklin  
Patricia Crawfis  
Betty Crawford  
Shelia Dirrim  
Robert Elliott  
Betsy Fisher  
Judy Fisher  
Alea Gardner  
Wendell Griffus  
Emily Harder  
Dave Jones  
Sherry Jurva  
Jay Latimer  
Kathy Latimer  
Mark Moleski  
Bill Mortimer  
Jennifer Prim  
Mike Roach  
Sharon Roth  
Martin Ryder  
Eleanor Smith

Bettie Stach  
Marvin Thompson  
Ed Truhan  
Linda Vincil  
Ed Woodward



**Shirley Crane**

Abbey Park  
3221 East Baldwin Rd, #239  
Grand Blanc, MI 48439

**Jeanne Dobes**

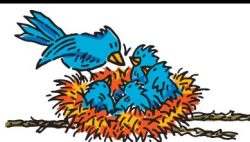
Symphony Linden  
202 S. Bridge Street  
Linden, MI 48451

**FOR THE HOMEBOUND:**

Marge Berryman  
Eleanor Hall

**OUR CHURCH FAMILY:**

Donna Brookins  
Dennis Brudnak  
Eric Campbell  
Roma Corey  
Cheryl Cottrell  
Lisa England  
Paul Manning  
Lisa McGehee  
Marilynn Moleski  
Dani Rossman  
Eileen Scott  
Norma Stanbury  
Bob Tritten



C.A.R.E. Team

Our C.A.R.E. Team is ready and willing to contact you or anyone you know who could benefit from a phone call or card or whatever it is that would help them with what they (or you) might be dealing with today.

Feel free to contact them at  
**[care.team@grandblancumc.org](mailto:care.team@grandblancumc.org)**

Be sure to check out Pastor Brian's daily devotionals on our YouTube Channel:

Grand Blanc UMC

We hope you will also "like & share!"



# CHRISTIAN EDUCATION

Director of Christian Education  
Angela Campbell  
christian.education@grandblancumc.org  
810-694-9040

## Pastor's Picks!

Each month Pastor Brian will be offering his "Pastor's Picks." He will offer a book recommendation. This book could be one that he is highlighting in his sermon series, one that goes with the current church season, or one that is just a good book to read. In addition, he will be "picking" a video too. These videos can be viewed for free using Amplify Media (see the handout on the welcome table or contact Angela on how to use Amplify Media). Hope you enjoy.

### August 2022 picks:



Book:  
"Why?: Making Sense of God's Will"  
By Adam Hamilton

Video:  
"Why?: Making Sense of God's Will"  
By Adam Hamilton  
A 4-Part Video Series



**Summer Fun Recap!** As of the printing of this newsletter, Summer Fun! has met 2 times! We've been learning about God's love and joy!

We have had fun with crafts like throwing paint sponges at a canvas that then revealed the message "God is Love." We have also tie-dyed t-shirts that share the message "God Is Good...All the Time." We've played on the playground, enjoyed snacks and of course our special Bible message each week.



### Sunday, August 21

Blessing of the Backpacks & Bible Presentation

**BIBLES:** If your child has not received a Bible from GBUMC, and would like to receive one, please email Angela at

christian.education@grandblancumc.org  
or call the office at 810-694-9040.



## Discovery Sunday!

Sunday, September 11

Education Wing

**Come and see some of the Christian Education Opportunities we have planned for Fall!**

**ALL AGES!**

**Also, snacks & other fun stuff!**



# Summer Lot Party!

## Wednesday, August 17

### 6:00pm to 8:00pm



This is an event for everyone, but our outreach goal is to draw together families of (primarily) elementary-aged children from the broader Grand Blanc community who are not already engaged in the life of the church, and demonstrate the love of God in a way that might be surprising to those who are unchurched. GBUMC families are welcome to attend and bring another family with you!

We will need lots of happy, energetic volunteers to share the love and spirit of GBUMC with others in our community.



## GAMES!!



## Food!



## FUN!



## tie dye T-shirts



## Community!





08/07  
08/14 Lutton  
08/21 Cerny  
08/28 Wolfgram

There is a sign-up sheet on the bulletin board next to the prayer room, or feel free to call or email the office to order flowers for the Sunday of your choice. Flower arrangements are \$15.00 each from Grand Blanc Florist and you may take them home following the 11:00am worship service. Your name and who the arrangement is in honor/memory of will be listed in the Sunday bulletin.

### Coffee Hour

08/07  
08/14 West  
08/21 Capell/Horton  
08/28 (Worship in the Park)  
Questions?  
Contact Gail Lutton 810-908-3456.  
Would you like to sign-up?  
Check out the available dates on the list in the hall outside the office.



### Greeters

08/07  
08/14 Hubel  
08/21 Cerny  
08/28 (Worship in the Park)  
*Would you like to volunteer?*  
*Sign-up on the welcome table.*

### COUNTERS

08/07 Jim Bunker, Tom Cerny  
08/14 Carol Capell, Ron Blakemore  
08/21 Jessica Smith, Carol Cerny  
08/28 Tom Cerny, Jim Wise



## *Birthdays and Anniversaries*

### Birthdays Wishes

1<sup>st</sup> Dani Rossman  
2<sup>nd</sup> Collen Fitch  
4<sup>th</sup> Martin Seaman  
6<sup>th</sup> Bruce Van Vlack  
7<sup>th</sup> Wyatt Booms  
8<sup>th</sup> Nick Federici  
9<sup>th</sup> David Roberts, Don Sawyer (81)  
10<sup>th</sup> Paul Manning, Levi Skinner  
11<sup>th</sup> Ron Blakemore (85),  
Betty Gay Charmoli  
12<sup>th</sup> Shelby Mitchinson  
14<sup>th</sup> Tom Cerny, Denise Holaly,  
Richard Smith  
15<sup>th</sup> Jean Sayre (92)  
16<sup>th</sup> Lauren Chwojnicky, Lauren Rice  
17<sup>th</sup> Donley Norris  
18<sup>th</sup> Chuck Lawcock  
20<sup>th</sup> Anne Coronado, Sam Smith,  
Jane West  
22<sup>nd</sup> Jennifer Banfield-Haggerty  
23<sup>rd</sup> Laura Heberling

25<sup>th</sup> Sarah Anderson  
26<sup>th</sup> Anne Fraile, Alex Trinidad  
27<sup>th</sup> Randi Klosterman  
28<sup>th</sup> Gordon Lawcock  
30<sup>th</sup> Marcia Ferguson (90)



### Anniversary Blessings

2<sup>nd</sup> Rose Marie & Dick Shick (64)  
6<sup>th</sup> Denise & Brian Tretheway  
9<sup>th</sup> Gina & Bob Briscoe (42)  
10<sup>th</sup> Nancy & Craig Fiederlein  
15<sup>th</sup> Betty Gay & Rich Charmoli (52)  
25<sup>th</sup> Sam & Ryan Cantley  
26<sup>th</sup> Traci & David Russell  
27<sup>th</sup> Ann & Bob Fraile (56),  
Carrie & Gene Kurosky

## *Pastor @ Panera*

Every Tuesday from 10am to noon. Prayer, Chat, Advice or a listening ear. All are welcome. Invite your friends to stop by to meet Pastor Brian.



Grand Blanc United Methodist Church  
Building and Roof Mortgage Summary

### **MORTGAGE BALANCE (as of 06-30-22)**

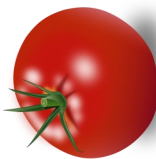

Mortgage Balance with UMF = \$134,032.90

Mortgage Reserve Fund Balance (as of 06-30-22) = \$9,974.52

Roof Reserve Fund Balance (as of 06-30-22) = \$16,534.90



# AUGUST 2022

Sun	Mon	Tue	Wed	Thu	Fri	Sat
 7 COMMUNION 10a Summer Worship	1 10a Pastor @ Panera 10a Yoga 6:30p Yoga 7p W & A Meeting	2 10a Pastor @ Panera 10a Yoga 6:30p Yoga 7p W & A Meeting	3 10a Prayer Group 10a Prayer Shawl	4 9a Just Finish It! Noon Summer Study/ Movie	5 10a Men's Coffee 7p AI Anon	6 10a O.A. 10a Yoga
7 COMMUNION 10a Summer Worship	8 6p Outreach 7p Ad Council via Zoom	9 10a Pastor @ Panera FH in use (FISH Back-pack distribution) 6:30p Yoga	10 10a Prayer Group 10a Prayer Shawl	11 Noon Summer Study/ Movie	12 10a Men's Coffee 7p AI Anon	13 10a O.A. 10a Yoga
14 10a Summer Worship	15 10a Pastor @ Panera 10a Yoga 6:30p Yoga	16 10a Pastor @ Panera 10a Yoga 6:30p Yoga	17 10a Prayer Shawl 10a Prayer Group 6p SUMMER LOT PARTY!!	18 9a Just Finish It!	19 10a Men's Coffee 7p AI Anon	20 10a O.A. 10a Yoga
21 10a Summer Worship Blessing of the Backpacks	22 10a Pastor @ Panera 10a Yoga 6:30p Yoga	23 10a Pastor @ Panera 10a Yoga 6:30p Yoga	24 10a Prayer Group 10a Prayer Shawl	25 9a Just Finish It!	26 10a Men's Coffee 7p AI Anon	27 10a O.A. 10a Yoga
28 10a WORSHIP IN THE PARK!!	29 10a Pastor @ Panera 10a Yoga 6:30p Yoga	30 10a Pastor @ Panera 10a Yoga 6:30p Yoga	31 10a Prayer Group 10a Prayer Shawl			

All are Welcome

# Church in the **PARK** *a worship experience*

*Save the Date*

**Sunday, August 28, 10am**

Physicians Park, 218 Reid Rd, Grand Blanc

***Take the opportunity to invite a friend to worship with us!***

~Volunteers are needed for Worship in the Park! Please see the sign-up sheet on the kiosk in the church Narthex or call the office. Monetary donations to help offset the cost of the hotdogs are also being accepted. Please place your donation in the offering basket, clearly marked for Worship in the Park.

We are looking for volunteers to help with set-up and clean-up too!

what **if...**

each person at GBUMC chose to take just ONE JAR out into the community to share with a local business???

**B**eginning in August we will affirm our school leadership by taking a jar to each school. If you have a special school you would like to deliver a jar to, please contact Melinda Elmore-Hajek. Remember, a jar is delivered every other month. This means six times a year, a jar of candy/gratitude is given to the community of people who, each day, care for our children.





Grand Blanc United Methodist Church  
515 Bush Avenue  
Grand Blanc, MI 48439

Church Office 810-694-9040 fax 810-694-1916  
www.grandblancumc.org

Rev. Brian West, Pastor  
Cathy Mitchinson, Office Administrator  
Angela Campbell, Director of Christian Education  
and Webmaster

Gary Brandt, 9:00 Music Director/Director of Common Grace  
Nancy Petrie, Bell Choir Director



GRAND BLANC UNITED METHODIST CHURCH

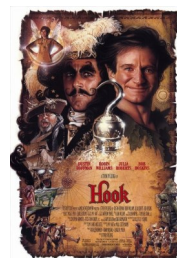
FRIENDS IN CHRIST EXERCISING  
LOVE, HOPE AND GRACE TO  
ENRICH ALL LIVES



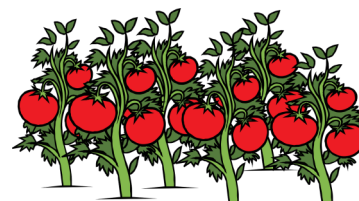
## Summer Movies & Faith

Join Pastor Brian and other movie-goers at Grand Blanc UMC for the final gathering in a Summer series of movies, conversation, and learning.

Join us at Noon, bring your own lunch to enjoy, and we'll enjoy this movie together with great conversation!



Thursday,  
August 11<sup>th</sup>  
**Hook**



Have you been participating in The Summer Gospel Challenge? Don't worry if you got behind, it's so easy to catch up! Remember to turn in your Summer Gospel Challenge journal at the end of summer, and be entered into a drawing for a special treat!



We would like to extend a special thank you for the continued support that this congregation shares with the youth and their mission trips to Appalachia.

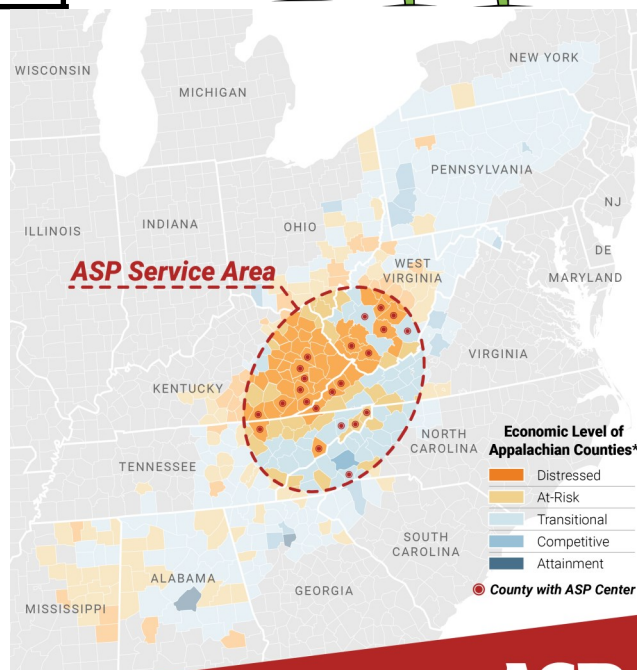
The Appalachia Service Project (ASP) envisions the eradication of substandard housing in Central Appalachia and the transformation of everyone who comes in contact with this ministry. ~Making homes warmer, safer and drier.~ In July, one of our teams worked on repair in a bathroom that had sustained a lot of water damage. They replaced walls and replaced the shower and tub. The other two teams worked together to put up new insulation and vinyl siding on a mobile home.

If you haven't already, be sure to watch the July 10, 2022 worship service on YouTube, to hear about our experiences!



By the way, we forgot to see if anyone knew the connection between our team names: Buttercup, 6 Fingers and MLT. Did you figure it out? Flip this page for the answer!

Buttercup, 6 Fingers, MLT = The Princess Bride!



\*Source: Appalachian Regional Commission  
County Economic Status and Distressed Areas in Appalachia

Unemployment data: U.S. Bureau of Labor Statistics, LAUS, 2016-2018  
Income data: U.S. Bureau of Economic Analysis, LAPI, 2018  
Poverty data: U.S. Census Bureau, American Community Survey, 2014-2018

**ASP**  
Appalachia  
SERVICE PROJECT\*